

KING COUNTY
COMPREHENSIVE
PLAN
LAND USE MAP
2004

Township 24 Range 7

Includes Comprehensive
Plan Land Use changes
through Ordinance #15028
(October 2004)

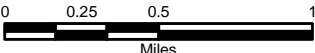
The information included on this map has been compiled by King County staff from a variety of sources and is subject to change without notice. King County makes no representations or warranties, express or implied, as to accuracy, completeness, timeliness, or rights to the use of such information. King County shall not be liable for any general, special, indirect, incidental, or consequential damages including, but not limited to, lost revenues or lost profits resulting from the use or misuse of the information contained on this map. Any sale of this map or information on this map is prohibited except by written permission of King County.

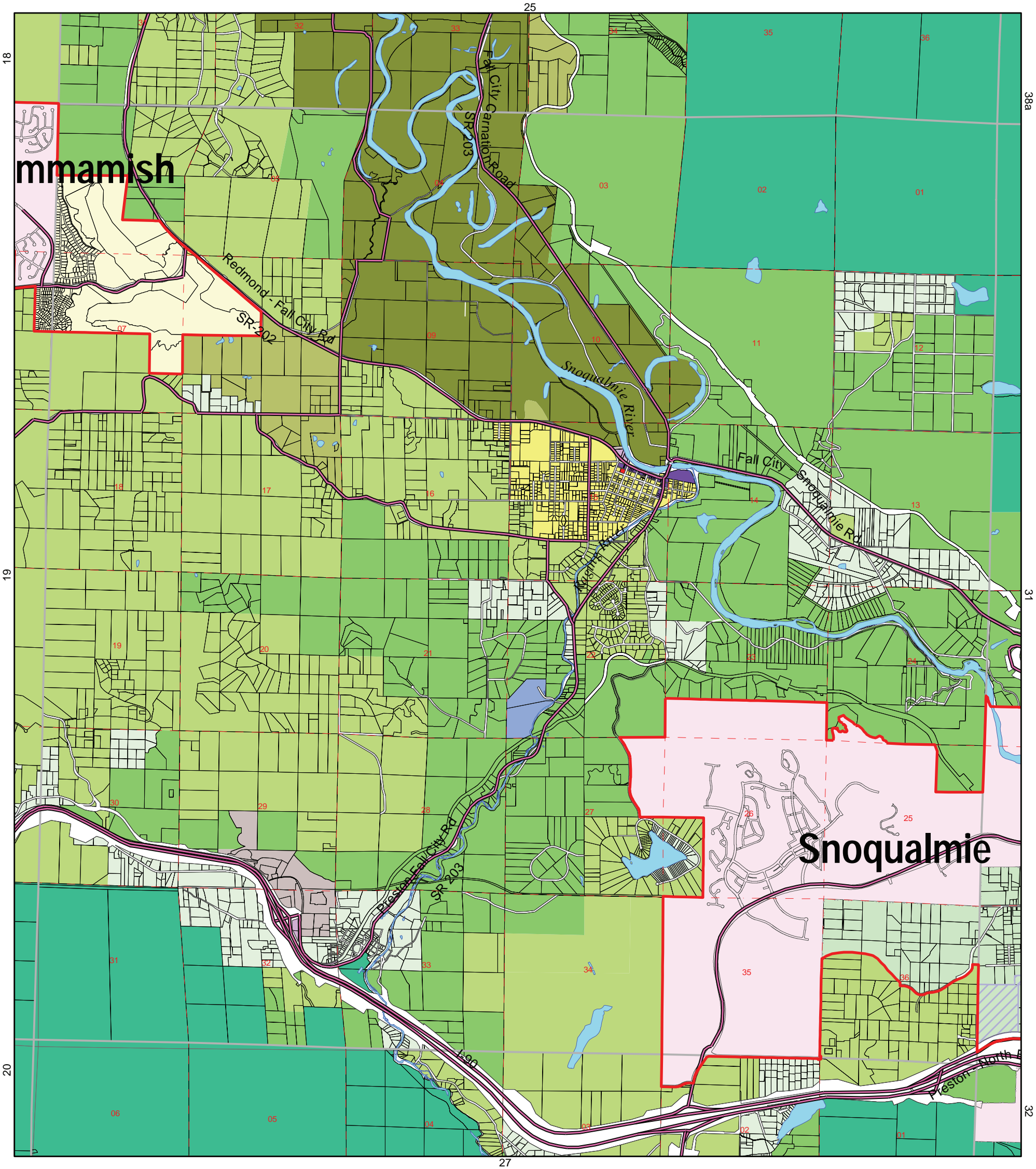
- | | |
|---------------------------------------|---|
| Unincorporated Activity Center | Agriculture |
| Community Business Center | Mining |
| Neighborhood Business Center | Greenbelt/Urban Separator |
| Commercial Outside of Centers | King County Owned Open Space/Recreation |
| Urban Plan Development | Other Parks/Wilderness |
| Urban Residential, high, > 12du/ac* | Incorporated City |
| Urban Residential, medium, 4-12du/ac* | Tribal Lands |
| Urban Residential, low, 1du/ac* | Urban Growth Area Boundary |
| Rural City Urban Growth Area | Forest Production District Boundary |
| Rural Town | Agricultural Production District Boundary |
| Rural Neighborhood | |
| Rural Residential, 1du/2.5-10ac | |
| Industrial | |
| Forestry | |

*Densities shown on this map do not include density lost from environmental controls nor additional density achievable through clustering and allowed bonuses. (du = dwelling unit; ac = acre)

The maps in the King County Comprehensive Plan and its technical appendices and this atlas are produced with a Geographic Information System. For additional information about features depicted on this map or other Comprehensive Plan maps, please contact the appropriate agency listed on the information sheet located in the inside front pocket of the Comprehensive Plan Binder, or call the Growth Management Hotline at 206-296-8777. For parcel-specific land use or zoning inquiries, please call the Department of Development and Environmental Services at 206-296-6600

This atlas can be viewed on the internet at:
<http://www.metrokc.gov/ddes/gis/funotes.htm>





KING COUNTY ZONING ATLAS

Townships 24 Range 7

Includes zoning changes through Ordinance #15326 (November 2005)

The information included on this map has been compiled by King County staff from a variety of sources and is subject to change without notice. King County makes no representations or warranties, express or implied, as to accuracy, completeness, timeliness, or rights to the use of such information. King County shall not be liable for any general, special, indirect, incidental, or consequential damages including, but not limited to, lost revenues or lost profits resulting from the use or misuse of the information contained on this map. Any sale of this map or information on this map is prohibited except by written permission of King County.

- | | |
|---|-------------------------------------|
| A-10 - Agricultural, one DU* per 10 acres | R-24 - Residential, 24 DU* per acre |
| A-35 - Agricultural, one DU* per 35 acres | R-48 - Residential, 48 DU* per acre |
| F - Forest | NB - Neighborhood Business |
| M - Mineral | CB - Community Business |
| RA-2.5 - Rural Area, one DU* per 5 acres | RB - Regional Business |
| RA-5 - Rural Area, one DU* per 5 acres | O - Office |
| RA-10 - Rural Area, one DU* per 10 acres | I - Industrial |
| UR - Urban Reserve, one DU* per 5 acres | Incorporated City |
| R-1 - Residential, one DU* per acre | Tribal Lands |
| R-4 - Residential, 4 DU* per acre | Urban Growth Area Boundary |
| R-6 - Residential, 6 DU* per acre | |
| R-8 - Residential, 8 DU* per acre | |
| R-12 - Residential, 12 DU* per acre | |
| R-18 - Residential, 18 DU* per acre | |

This map shows only the base zoning for each parcel of property.

This map does not show special development conditions, such as P-suffix Conditions, Special District Overlays, or potential zoning that apply to many properties in King County.

This map is a general color representation of official zoning controls. Final decisions on any inconsistencies are based on the ordinance establishing the current zoning.

All property-specific development conditions are displayed on the official zoning control at the Department of Development and Environmental Services (DDES), 900 Oakesdale Ave SW, Renton, WA 98055, Telephone (206) 296-6600.

The atlas is produced by King County's Geographic Information System. Copies of this atlas are available for review or purchase at DDES. The atlas can be viewed on the internet at: <http://www.metrokc.gov/ddes/gis/zonnotes.htm>

DU* = Dwelling Unit



Map generated: July 13, 2006

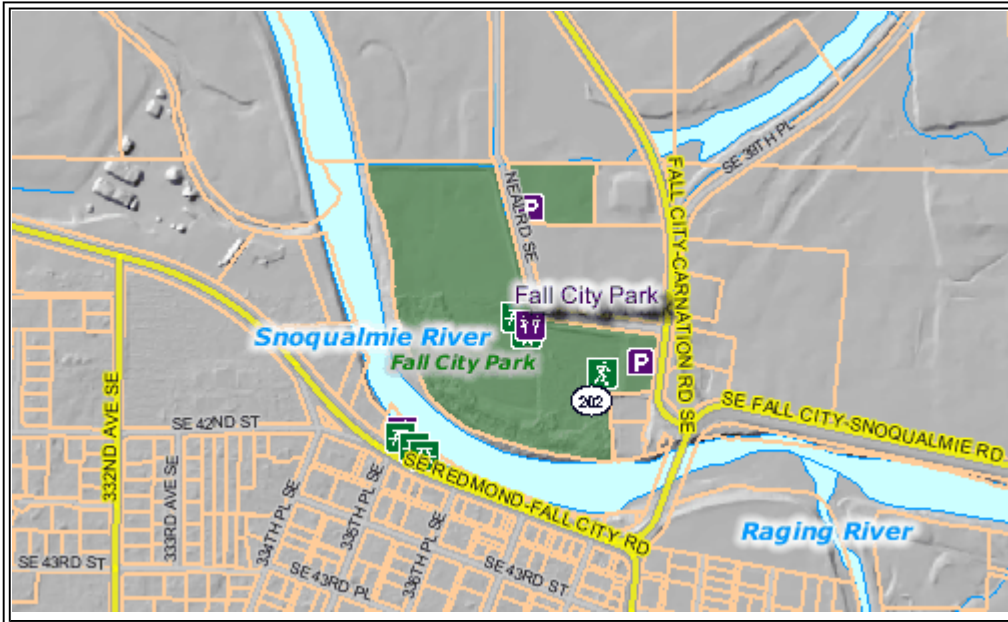
COOPERT \\ddes707\gis-m\maps\200607\coopert_20060713_z26.pdf
m:\tony\projects\atlas\zoning_atlas.mxd

**King County**[Home](#)[News](#)[Services](#)[Comments](#)[Search](#)

King County Parks Info

[Parks](#) | [Trails](#) | [Natural Areas](#) | [Rentals](#) | [Pools](#) | [Community](#) | [Volunteer](#)

- » **Search again** for another Park Site
- » **Reserve indoor or outdoor park facilities**
- » For more interactive mapping go to **Parks iMap**
(Requires high-speed internet connection - DSL or better)



Site Name: **Fall City Park**

Location: **4101 Fall City-Carnation Rd SE
(State Rt. 203) Fall City WA 98024**

Web Link:

Accessible by Public Road: **Yes**

Parking Lot at Site: **Yes**

Acreage: **27.54 ac.**

Trail Mileage:

KC Council District: **3**

WRIA Basin: (Water Resource Inventory Area) **WRIA 7 - Snohomish Basin**

Facilities Count:

Facility Type

Facility Count

Access Point (Street)

1

Baseball Field	1
Equestrian Facility	3
Parking Lot	2
Picnic Area	1
Point of Interest	1
Restroom	1
Soccer Field	1

Updated: 7/30/2008

For questions about the Parks and Recreation Division, please contact **Kathy Nygard**, Assistant to the Director.

For questions about the Web site for the Parks and Recreation Division, please contact **Mel Boupfarath**

**Department of Natural Resources and Parks
Parks and Recreation Division**
201 S. Jackson Street, Suite 700
Seattle, WA 98104
Phone: 206-296-8687
Fax: 206-296-8686
TTY: 711 Relay Service

Related Information:

Park Site List and Address

Park Locator

Public Boating And Fishing Access

**Parks | Trails | Natural Areas | Rentals | Pools | Community | Volunteer |
Legacy | About**

Home | Privacy | Accessibility | Terms of use | Search

Links to external sites do not constitute endorsements by King County. By visiting this and other King County web pages, you expressly agree to be bound by terms and conditions of the site

**King County**[Home](#)[News](#)[Services](#)[Comments](#)[Search](#)

King County Parks Info

[Parks](#) | [Trails](#) | [Natural Areas](#) | [Rentals](#) | [Pools](#) | [Community](#) | [Volunteer](#)

- » **Search again** for another Park Site
- » **Reserve indoor or outdoor park facilities**
- » For more interactive mapping go to **Parks iMap**
(Requires high-speed internet connection - DSL or better)



Site Name: **Quigley Park**

Location: **33512 SE Redmond-Fall City Rd
Fall City WA 98024**

Web Link:

Accessible by Public Road: **Yes**

Parking Lot at Site: **No**

Acreage: **0.51 ac.**

Trail Mileage:

KC Council District: **3**

WRIA Basin: (Water Resource Inventory Area) **WRIA 7 - Snohomish Basin**

Facilities Count:

Facility Type

Facility Count

Access Point (Street)

1

Picnic Area	3
Point of Interest	1

Updated: 7/30/2008

For questions about the Parks and Recreation Division, please contact **Kathy Nygard**, Assistant to the Director.

For questions about the Web site for the Parks and Recreation Division, please contact **Mel Boupfarath**

**Department of Natural Resources and Parks
Parks and Recreation Division**
201 S. Jackson Street, Suite 700
Seattle, WA 98104
Phone: 206-296-8687
Fax: 206-296-8686
TTY: 711 Relay Service

Related Information:

Park Site List and Address

Park Locator

Public Boating And Fishing Access

**Parks | Trails | Natural Areas | Rentals | Pools | Community | Volunteer |
Legacy | About**

Home | Privacy | Accessibility | Terms of use | Search

Links to external sites do not constitute endorsements by King County. By visiting this and other King County web pages, you expressly agree to be bound by terms and conditions of the site

Fall City Park

Acres: 27.5

Maintenance District:

Snoqualmie District

Resource Coordinator:

Area 3

Site Lead:

Snoqualmie District

Property Type:

Park Site

2004 Open Space Plan

Classification:

MultiUse

Transition Plan:

Local Rural Parks

Drainage Basin:

Snoqualmie River

Thomas Bros. Page: 98024

Urban/Rural (GMA): Rural

WRIA: 7 (Snohomish)

Facilities at this Site:

Baseball Field: 1

Bollard: 2

Equestrian Facility: 3

Parking Lot: 2

Picnic Area: 1

Point of Interest: 1

Sign: 2

Soccer Field: 1

Parcel number(s):

1524079090

Acres: 24.91

Interest: Owned in Fee

Funding:

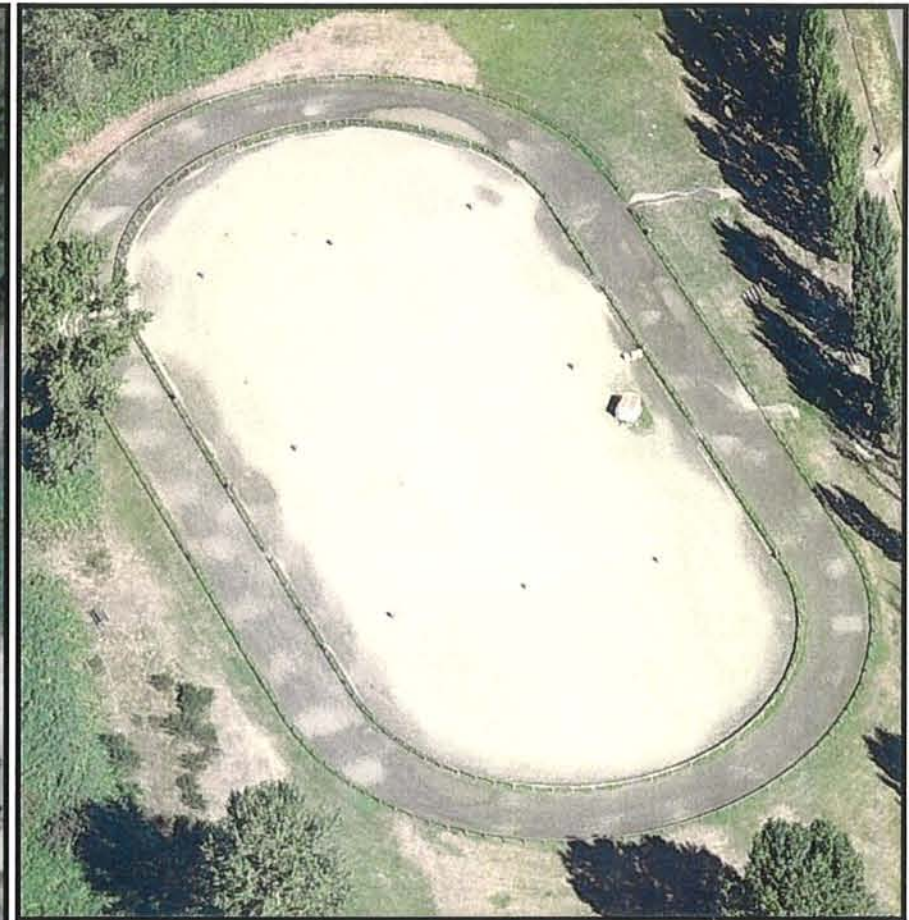
Forward Thrust - 1977

1524079147

Acres: 2.63 (114673 SqFt.)

Interest: Owned in Fee

Funding: County



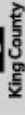
Streams and Rivers
Charter Amendment Parcels
King County Parks Property Interests
2005 Urban Growth Boundary
Municipal Boundaries



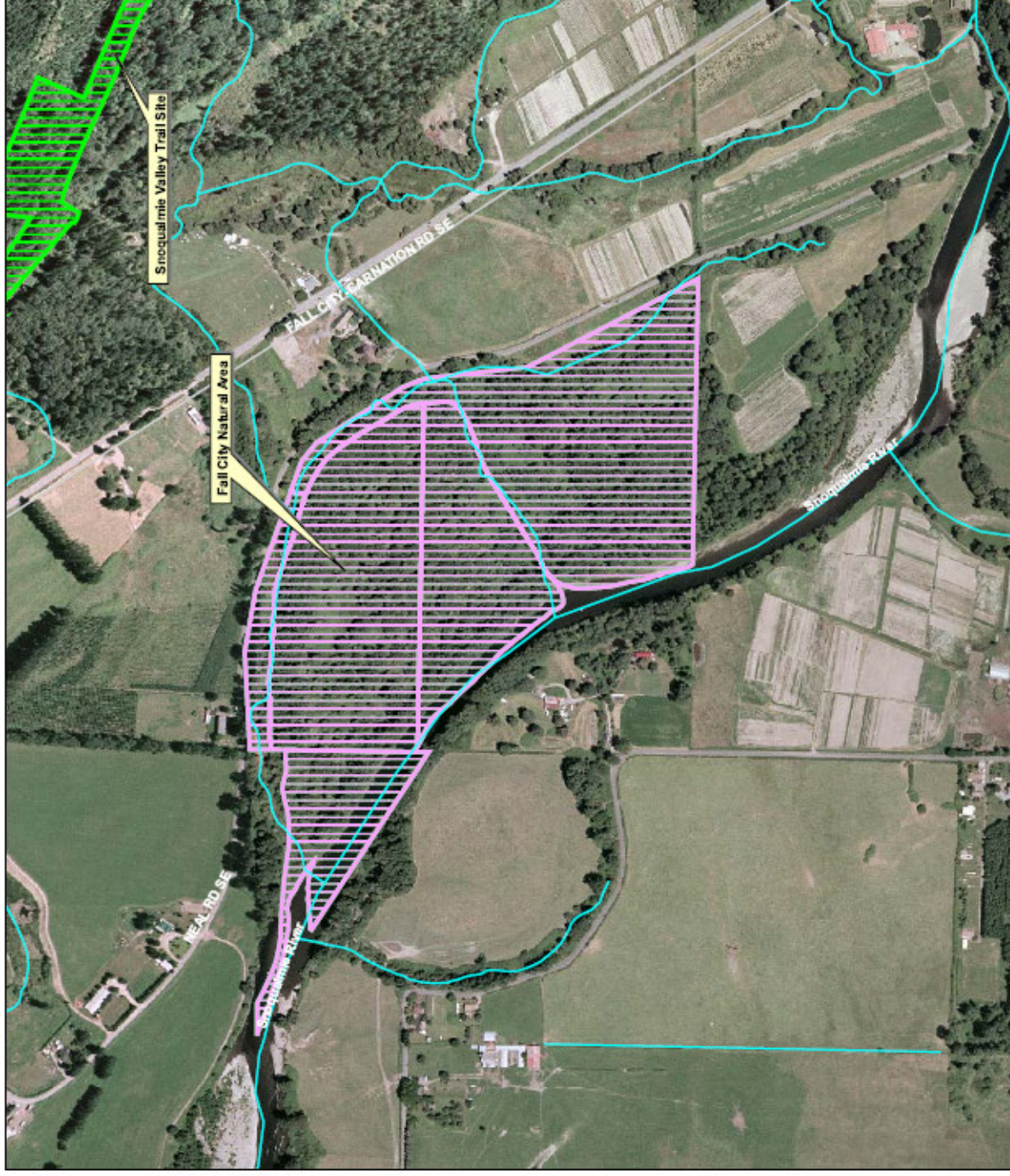
Year	1990	2000	2010	2020	2030	2040	2050	2060	2070	2080	2090	2100
Population (millions)	5.3	6.1	6.9	7.7	8.5	9.3	10.1	10.9	11.7	12.5	13.3	14.1
GDP (trillion \$)	1.5	2.5	3.5	4.5	5.5	6.5	7.5	8.5	9.5	10.5	11.5	12.5
Per capita GDP (\$)	283	410	507	583	647	700	743	787	826	867	902	936

The information included on this map has been compiled by King County staff from a variety of sources and is subject to change without notice. King County makes no representations, or warranties, express or implied, as to accuracy, completeness, timeliness, or rights to the use of such information.

This document is not intended for use as a survey product. King County shall not be liable for any general, special, indirect, incidental, or consequential damages including, but not limited to, lost revenues or lost profits resulting from the use or misuse of the information contained on this map. Any sale of this map or information on this map is prohibited except by written permission of King County.



11. Predict the value for the rate constant k for a second-order reaction with $t_{1/2} = 100$ s and $[A]_0 = 0.10$ M.



Fall City Natural Area

Charter Amendment Information



A map of the state of Ohio. A red square is drawn in the western part of the state, indicating the area shown in the following map.

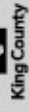
Streams and Rivers
Charter Amendment Parcels
King County Parks Property Interests
2005 Urban Growth Boundary
Municipal Boundaries



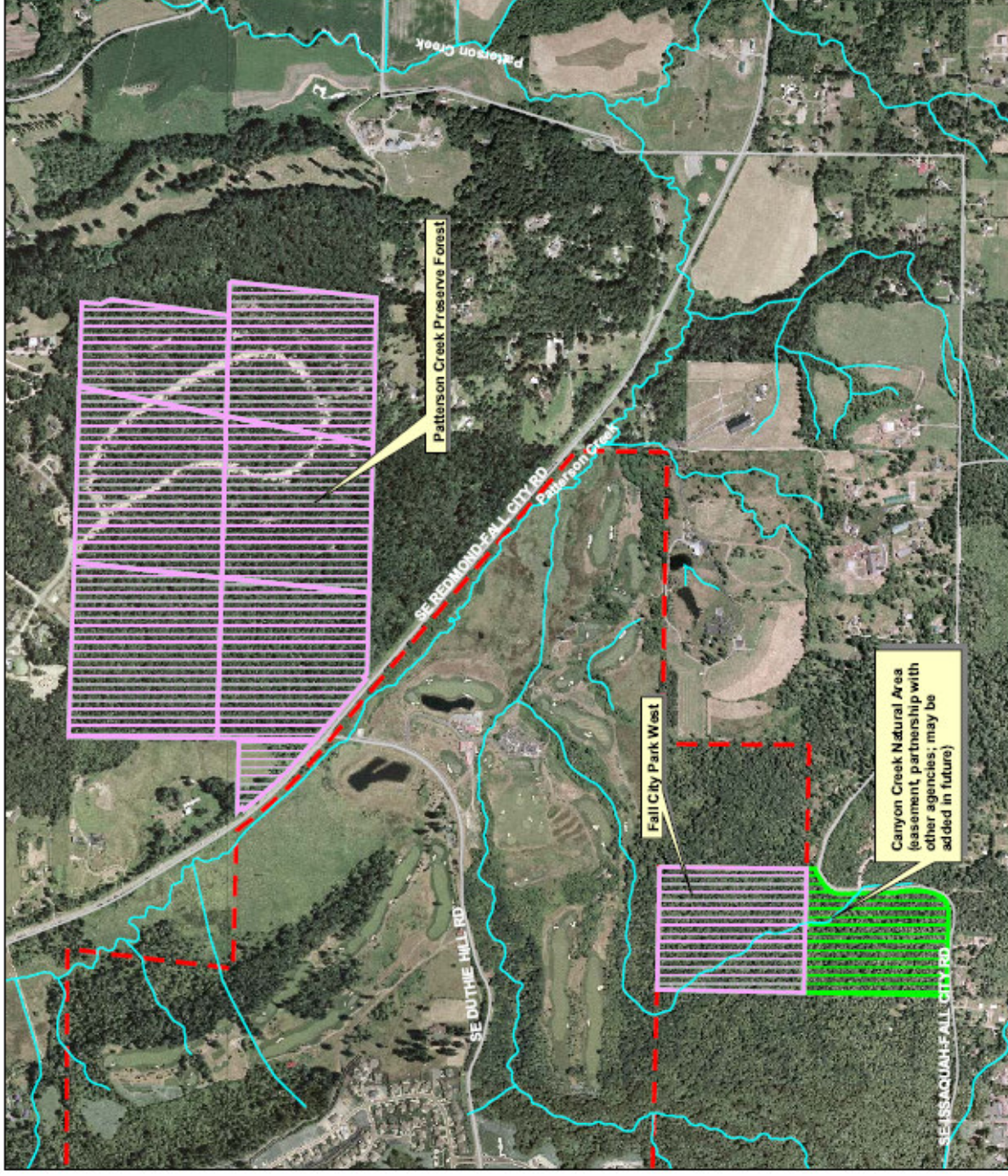
300	0	300	600	900	1200	1500	Feet

The information included on this map has been compiled by King County staff from a variety of sources and is subject to change without notice. King County makes no representations or warranties, express or implied, as to accuracy, completeness, timeliness, or rights to the use of such information.

This document is not intended for use as a survey product. King County shall not be liable for any general, special, indirect, incidental, or consequential damages including, but not limited to, lost revenues or lost profits resulting from the use or misuse of the information contained on this map. Any sale of this map or information on this map is prohibited except by written permission of King County.



11. Explain why the following integral diverges or converges.



Fall City Park West

Charter Amendment Information